

TYPICAL DESIGNS



GENOX
shredding recycling

GENOX RECYCLING TECH CO.,LTD
2 Xiqiao, Dongchong, Panyu, Guangzhou, China
Tel: +86-20-66851345 Fax: +86-20-66851347 PC: 511453
www.genoxtech.com info@genoxtech.com

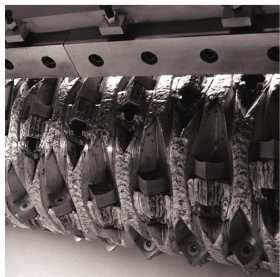
GENOX
shredding recycling

CABLE RECYCLING



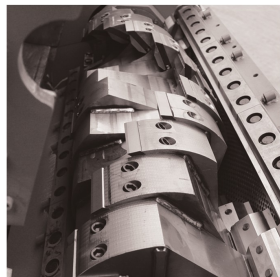
CABLE RECYCLING SYSTEMS

www.genoxtech.com



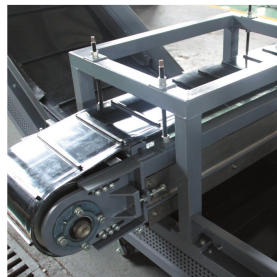
Pre-Shredding

When recycling cables with diameters larger than 15mm, pre-shredding in one of our single shaft shredders is a necessary stage of the system in order to cut the cables into 40–50mm pieces. The cable pre-shredder is supplied with a tungsten carbide (hardfaced), wear resistant rotor to prolong the service life.



Secondary Shredding

Pre-shredded cables and/or cables with a diameter less than 15mm enter the process at this stage. The granulator equipped with a high inertia, cascade cutting rotor (C-rotor) further reduces the cable into small fragments.



Ferrous Metal Separation

An overband magnet removes ferrous metal contamination such as nuts, bolts, screws, wire armor etc. from the pre-shredded cable waste after it has been processed by the single shaft pre-shredder. The magnet is usually positioned above either a conveyor belt or vibratory feeder.



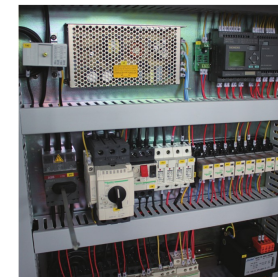
Non-Ferrous & Plastic Separation

An air separation table is used to segregate the copper or aluminium from the PVC and other insulation materials within the granulated product. The separator is of heavy duty construction and equipped with powerful motors to ensure optimum performance.



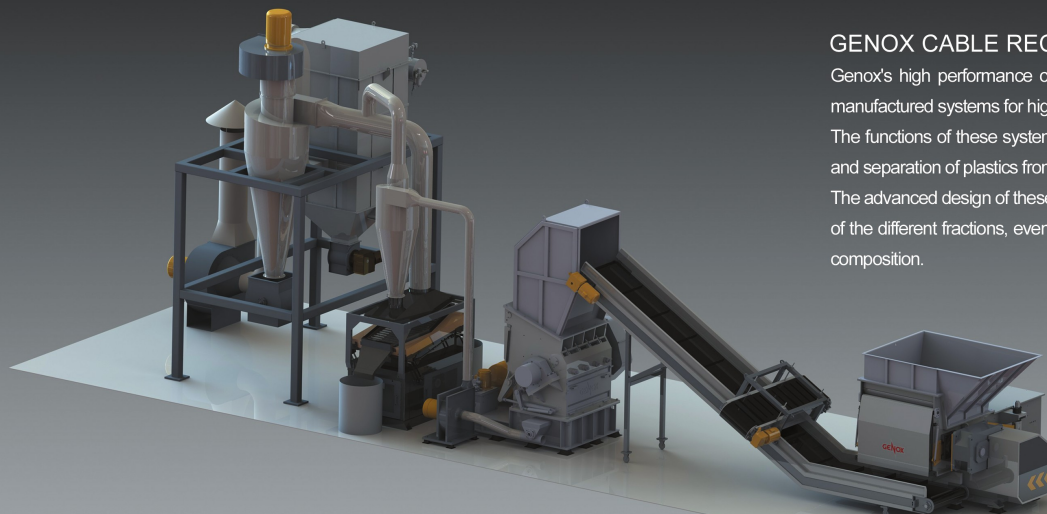
Dust Collection System

A central dust collection system is positioned beside the recycling line. Dust and fluff created during shredding & granulation processes is sucked through a series of pipes and collected in high efficiency filters mounted within the unit through the air pipes. The dust is then discharged beneath the filter unit into bins or bags.



Electrical Control Panel

The recycling line is equipped with a stand alone electrical control cabinet incorporating a Siemens PLC controller, and high quality Schneider & ABB electrical components. An intelligent program is used to control the entire system to include shredder motor auto reverse during overload and auto stop when idle for prolonged periods.



GENOX CABLE RECYCLING TECHNOLOGY

Genox's high performance cable recycling plants are specifically designed and manufactured systems for high volume cable processing.

The functions of these systems include pre-shredding, steel removal, granulation and separation of plastics from copper or aluminium.

The advanced design of these robust recycling lines results in excellent separation of the different fractions, even when processing mixed cables of varying size and composition.